

Release #2011-S-017
For Immediate Release:
April 1, 2011

Contact: Tyler Stalker
916-557-5107
tyler.m.stalker@usace.army.mil

South River Road to close April 6 for setback levee construction

SACRAMENTO, Calif. – The U.S. Army Corps of Engineers Sacramento District is set to close South River Road beginning April 6 to construct a setback levee as part of the Sacramento River Bank Protection Project.

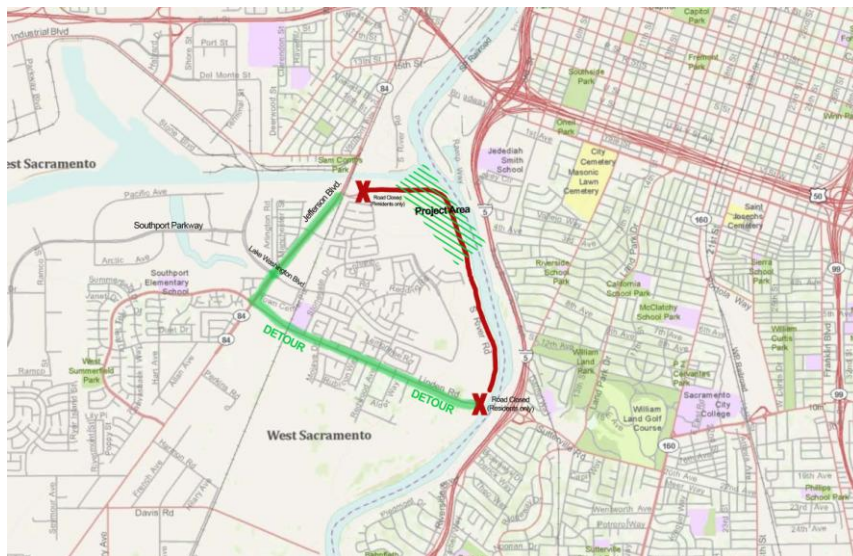
South River Road will be closed from Marina Green Drive (near Jefferson Boulevard) to Linden Road until November 2011. Property access within the road closure section will be maintained; however, all through-traffic will be re-directed to Linden Road and Jefferson Boulevard. Detour and road closure signs have been posted along the route.

The project is a joint effort between the Corps and the Central Valley Flood Protection Board to strengthen levees along the Sacramento River and its tributaries.

The new levee will be set back 250 feet from the old levee and will be 15 feet high, 2,200 feet long, and have a 75 foot deep seepage cutoff wall in its center. The design is intended to widen the river channel to hold more water during a flood or storm, while preserving the wildlife habitat between the old levee and the river. When the project is completed, South River Road will run atop the new setback levee and reconnect to the existing levee at each end.

View the news release online [here](#).

###



U.S. ARMY CORPS OF ENGINEERS -- SACRAMENTO DISTRICT
1325 J ST. - SACRAMENTO, CA 95814
www.spk.usace.army.mil
www.facebook.com/sacramentodistrict
www.youtube.com/sacramentodistrict
www.twitter.com/USACEsacramento
www.flickr.com/photos/sacramentodistrict/